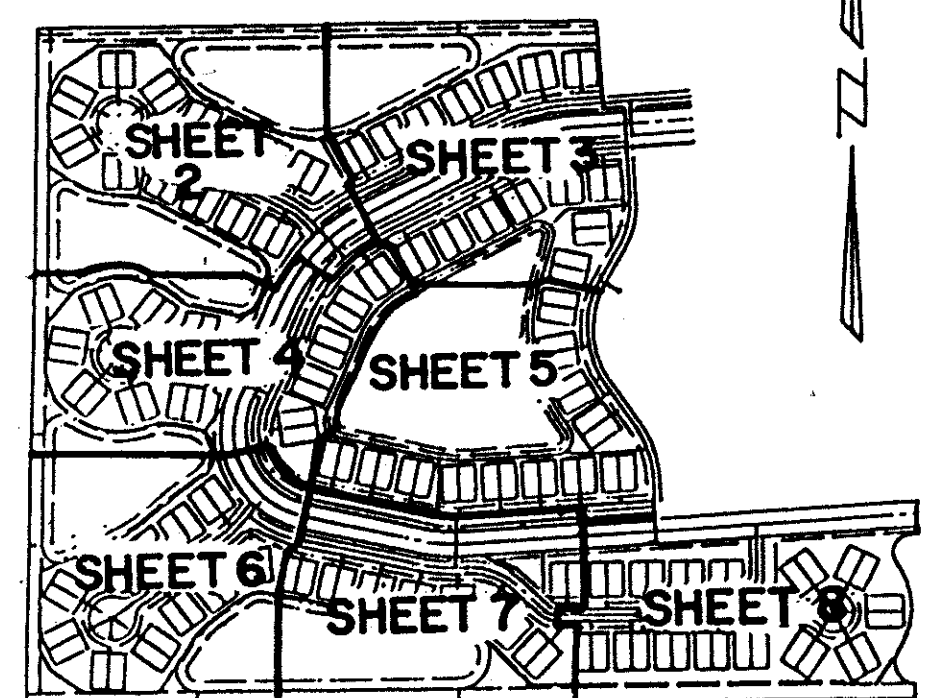


EMERALD POINTE PLAT NO. 2

A PART OF A PLANNED UNIT DEVELOPMENT
 LYING IN SECTION 16, TOWNSHIP 46 SOUTH, RANGE 42 EAST
 PALM BEACH COUNTY, FLORIDA.
 SHEET 2 OF 8 FEBRUARY, 1990.

HAGEN RANCH HEIGHTS
 (PLAT BOOK 50, PAGES 125 & 126)

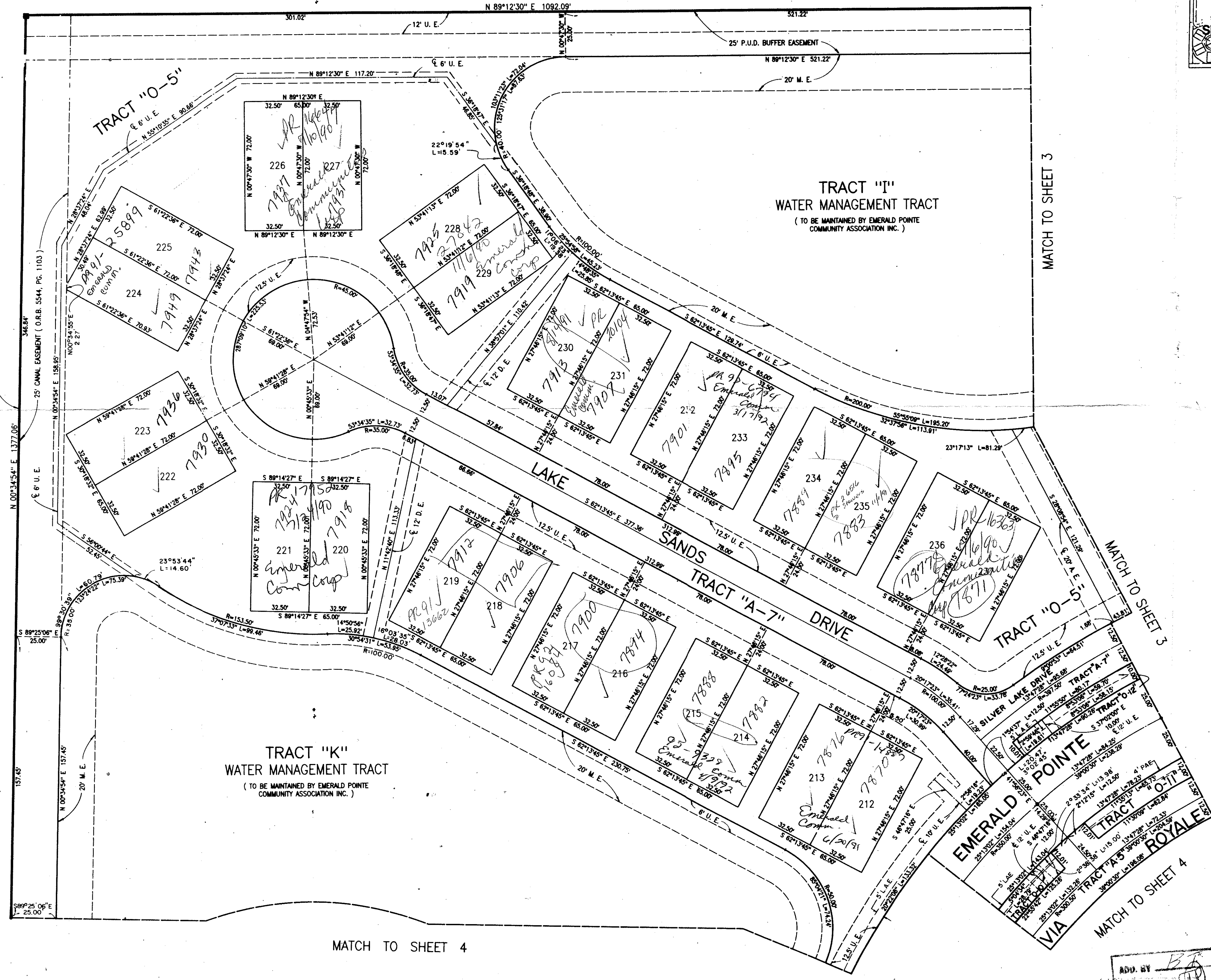


KEY MAP

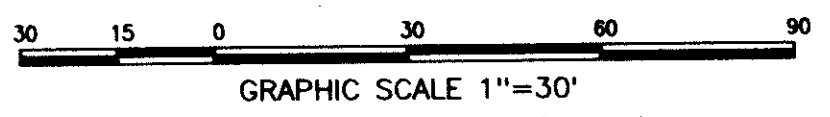
49

STATE OF FLORIDA
 COUNTY OF PALM BEACH
 This Plat was filed for record at _____
 M. this _____ day of _____, 19____
 and duly recorded in Plat Book No. _____
 on Page _____
 By John B. Dunkle, Clerk of the Circuit Court
 _____ D.C.

L.W.D.D. EQUALIZER CANAL 2 (90' RIGHT-OF-WAY)



DIVISION OF EMERALD POINTE PLAT NO. 2
 SHEET 49
 PLAT BOOK 50, PAGES 125 & 126
 BY B. J. R. S.
 84-119
 333446



0440-002 65/49

Landmark Surveying & Mapping Inc.
 1850 FOREST HILL BOULEVARD
 PH. (407)433-5405 SUITE 100 W.P.B. FLORIDA

EMERALD POINTE PLAT NO. 2

ADD. BY
 CHECKED BY

Pet. 84-119